



1053 SPRUCE ROAD * P.O. BOX 3348 * ALLENTOWN, PA 18106-0348
610-398-2503 * FAX 610-398-8413 * www.lehighcountyauthority.org
email: service@lehighcountyauthority.org

Water Supply Monitoring – **Weekly Report**

REPORTING PERIOD: January 1, 2016 – November 19, 2016

REPORT DATE: November 25, 2016

PA-DEP DROUGHT STATUS: Drought Warning (declared 11/3/2016)

This report has been prepared by Lehigh County Authority (LCA) to provide the public with important data related to water supplies that are utilized to serve customers with safe drinking water in the following primary service areas:

Allentown Division: Approximately 33,000 customers located within the City of Allentown, with additional “bulk water” provided to neighboring townships and LCA’s Central Lehigh Division through water system interconnections.
Primary Water Sources:
Little Lehigh Creek
Schantz Spring
Crystal Spring
Lehigh River (emergency supply)

Central Lehigh Division: Approximately 20,000 customers located in suburban areas of central and western Lehigh County, primarily in Upper and Lower Macungie townships, with additional customers located in surrounding townships.
Primary Water Sources:
Allentown Division interconnection (see above)
14 Wells located throughout the service area

Weekly Report Contents:

The information contained in this report is derived from data sources that LCA monitors as an overall indication of water supply adequacy and trends in supply status, along with customer usage. The information is displayed in graphical format for informational purposes only. By issuing this data publicly, LCA hopes to communicate its commitment to sharing vital environmental and public health information. While this report does not seek to share specific conclusions or recommendations, making data available in this manner is necessary to foster additional community dialog regarding appropriate and sustainable use of our precious natural resources.

US Geological Survey Daily Data - Little Lehigh Creek Flows	Page 2
US Geological Survey Daily Data – Haafsville Monitoring Well Levels	Page 3
LCA Monitoring Well – 4817 Lower Macungie Road (WL8R)	Page 4
LCA Monitoring Well – Church Lane (WL12R)	Page 5
LCA Monitoring Well – Well # 2 (Capece Tract, Breinigsville)	Page 6
LCA Monitoring Well – Well C (Capece Tract, Breinigsville)	Page 7
Customer Usage Weekly Update	Page 8

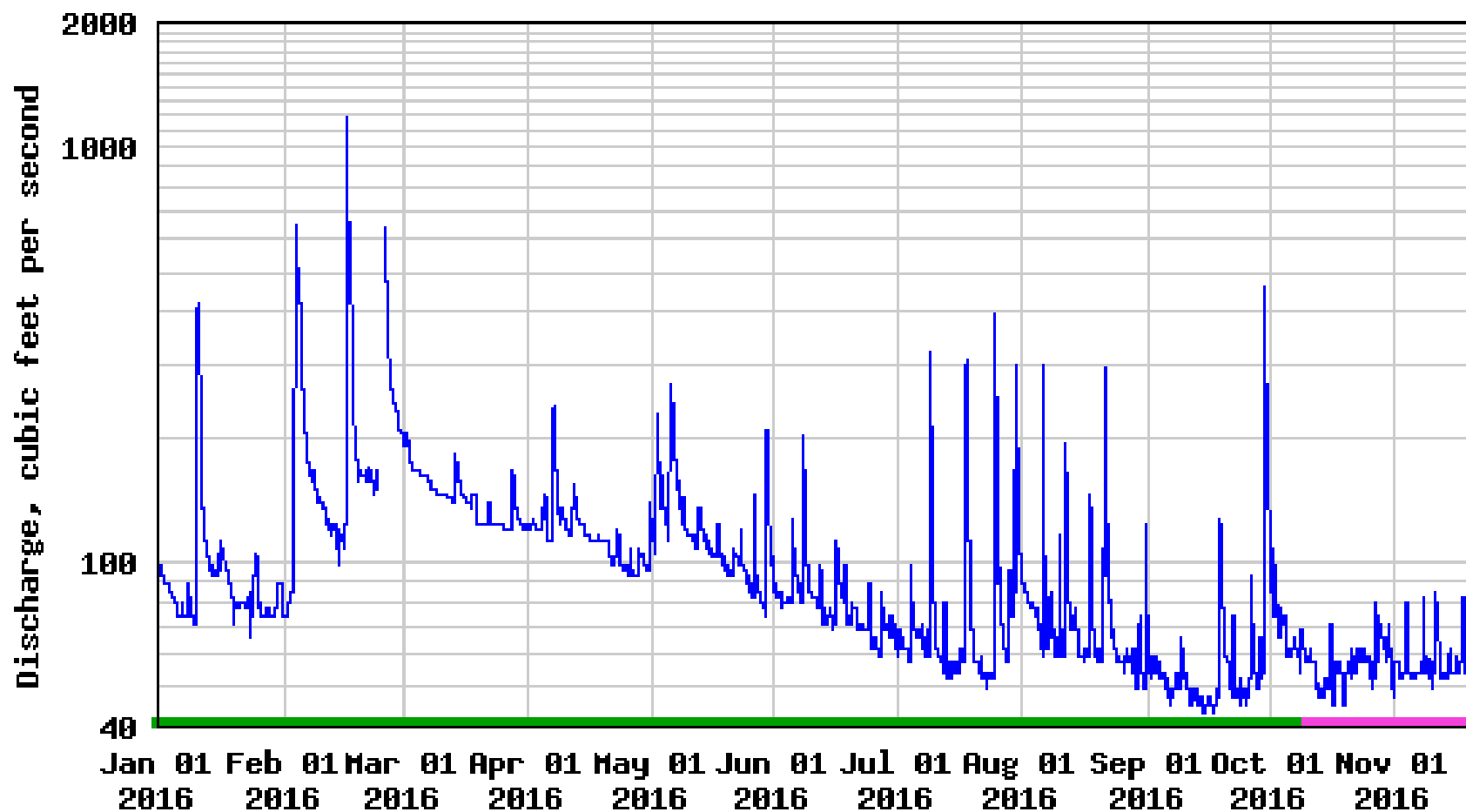
Additional Water Supply Information:

A monthly report showing summary-level data is also available upon request.

Every drop matters. Every customer counts.



USGS 01451650 Little Lehigh Creek at Tenth St. Br. at Allentown



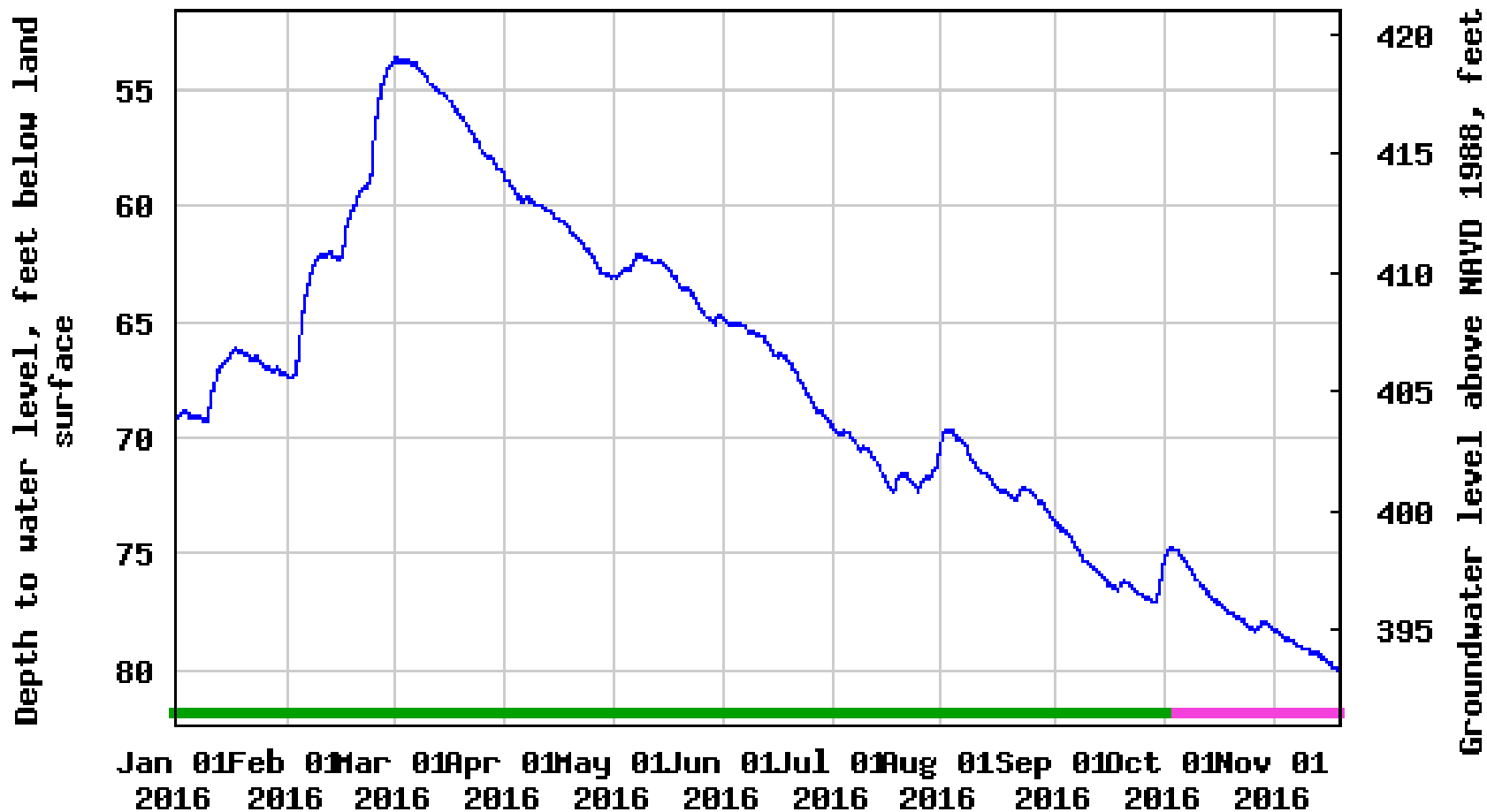
— Discharge

— Period of provisional data

— Period of approved data



USGS 403429075392401 LE 644 Lehigh County Observation Well



— Depth to water level — Period of provisional data
— Period of approved data